

3-module cabinet: water + soap + hand dryer



EN

Complete cabinets

Ref. BTM02

Water + Soap + Air

OVERVIEW

- Hygiene unit designed to house modules for a soap dispenser, water tap, and hand dryer, all automatic. Modules included.
- The front pictograms for soap, water, and hand dryer are backlit with LED lights. It also features backlighting on the lower part of the unit.
- Available with a paper towel pictogram instead of a hand dryer (model BTM03).
- The door is suspended, lockable with a key, and equipped with two pneumatic pistons that facilitate opening and closing.
- 4 Schuko-type sockets available to connect the soap dispenser, water tap, hand dryer, and a transformer for LED lighting (included). The entire electrical installation is included; only one power supply point is required for all cabinet functions.
- Adjustable fittings and wall mounting brackets included.

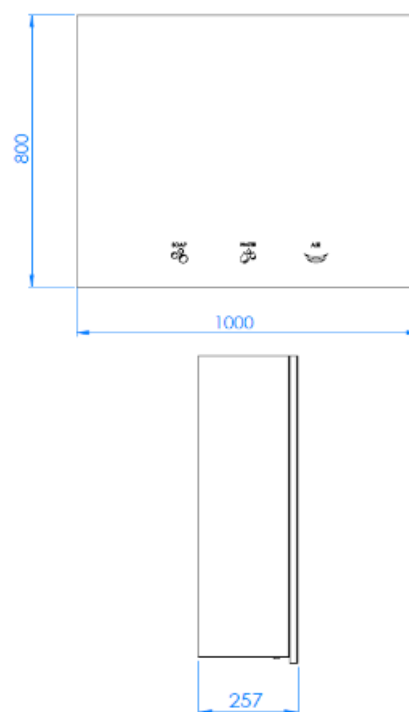
COMPONENTS AND MATERIALS

- **Automatic water tap dispenser module GA024BTM:** see corresponding technical data sheet.
- **Automatic soap dispenser module DJ024BTM:** see corresponding technical data sheet.
- **Automatic hand dryer module M17A-BTM24:** see corresponding technical data sheet.

TECHNICAL DATA

Weight	53,70 kg
Pictogram light	<10 W
Cabinet backlight	<16 W

DIMENSIONS



OPERATION

- **Automatic water tap dispenser module GA024BTM:** see corresponding technical data sheet.
- **Automatic soap dispenser module DJ024BTM:** see corresponding technical data sheet.
- **Automatic hand dryer module M17A-BTM24:** see corresponding technical data sheet.

Mediclinics S.A reserves the right to make changes or modifications to the products and their specifications without prior notice.


www.mediclinics.com


REVISION:
04/26

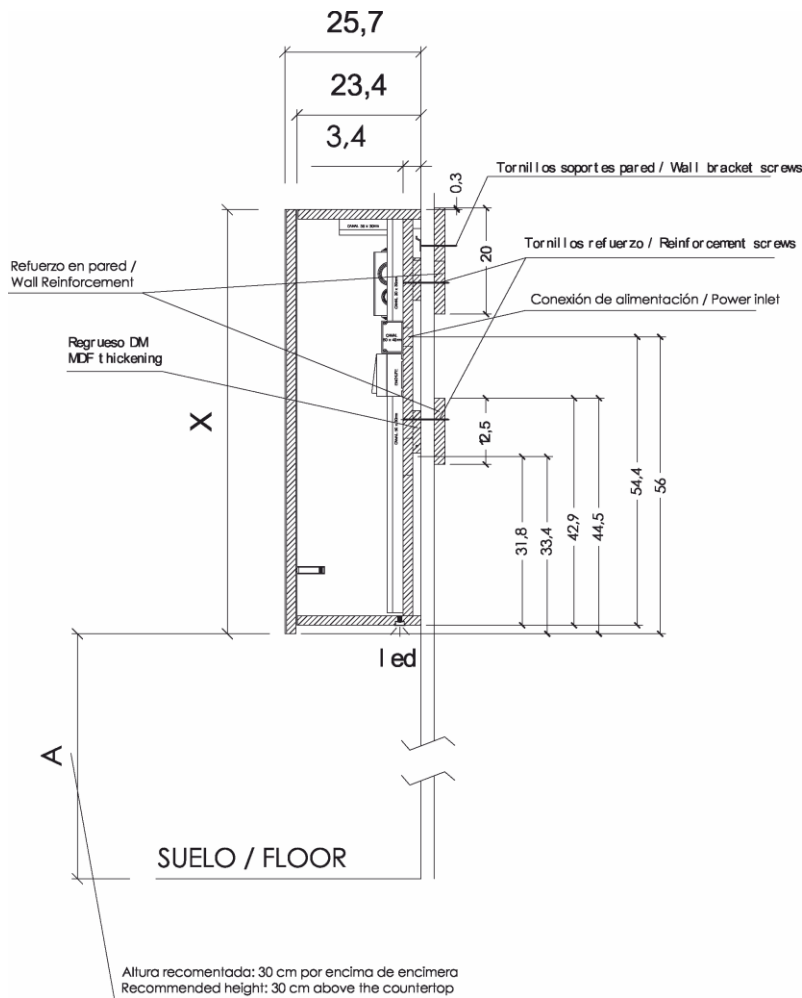
3-module cabinet: water + soap + hand dryer



GUIDE SPECIFICATION

Hygiene cabinet shall be composed of three integrated elements: an automatic hand dryer, a sensor-operated faucet, and a sensor-operated soap dispenser. The cabinet shall weigh 53,70 kg. It shall be manufactured from moisture-resistant DM wood with a matte black finish and shall include a front mirror door with LED pictograms indicating each component. The sensor faucet shall be equipped with an infrared sensor located at the bottom. The faucet shall weigh 2,10 kg. It shall operate at a frequency of 50/60 Hz and a voltage of 220–240 V, or alternatively on 4x LR6 1,5 V batteries. Water flow rate shall be under 2 L/min (other flow rates available). Motion detection distance shall be adjustable via magnet between 5 and 25 cm. The soap dispenser shall be equipped with an infrared sensor located at the bottom. The dispenser shall weigh 3,80 kg. It shall operate at a frequency of 50/60 Hz and a voltage of 220–240 V, or alternatively on 4x LR6 1,5 V batteries. The soap tank shall have a capacity of 1,50 L. The viscosity of the soap shall be 1–3.500 cps for gel and 1–20 cps for foam. Motion detection distance shall be adjustable via magnet between 5 and 25 cm. The unit shall comply with the applicable requirements of the European Low Voltage Directive (LVD) 2014/35/EU (EN 60335-1, EN 61000-3-2, and EN 61000-3-3). The integrated hands-under automatic hand dryer shall be equipped with an infrared sensor located at the bottom of the unit. The dryer shall weigh 3,20 kg. The housing shall be made of steel with a white finish and shall have a thickness of 1,5 mm. The base shall be made of aluminum. The dryer shall be equipped with a brushed Class F motor with an adjustable speed range between 23.000 and 32.000 rpm and a motor power of 180–350 W. A heating element with on/off switch and a power of 500 W shall be included. The unit shall operate at a frequency of 50/60 Hz and a voltage of 220–240 V, with a total power range of 180–850 W and a current consumption of 2,8–5 A. Drying time shall be between 10 and 12 seconds, with an airspeed of 290–400 km/h. Motion detection distance shall be adjustable via potentiometer between 5 and 20 cm. A HEPA filter shall be included as standard, and an ionizer shall be optionally available. The hand dryer shall comply with applicable standards for hand dryers: EN 60335-1, EN 60335-2-23, EN 61000-3-2, and EN 61000-3-3.

ASSEMBLY / RECOMMENDED INSTALLATION HEIGHTS



CERTIFICATIONS



Mediclinics S.A reserves the right to make changes or modifications to the products and their specifications without prior notice.



www.mediclinics.com



REVISION:
04/26