

3-module cabinet: Water + Soap + Paper



EN

Complete cabinets

Ref. BTM03

Water + Soap + Paper

OVERVIEW

- Hygiene cabinet designed to house modules for an automatic soap dispenser, an automatic water tap, and a paper towel dispenser. Modules included.
- The front pictograms for soap, water, and paper towels are backlit with LED lights. The cabinet also features backlighting on the lower part.
- Available with a hand dryer pictogram instead of paper towels (model BTM02). The door is suspended, lockable, and equipped with two pneumatic pistons that facilitate opening and closing.
- 3 Schuko-type sockets are available to connect the soap dispenser, water tap, and a transformer for the LED lights (included). The entire electrical installation is included; only one power supply point is required for all cabinet functions.
- Adjustable fittings and wall mounting brackets are included.

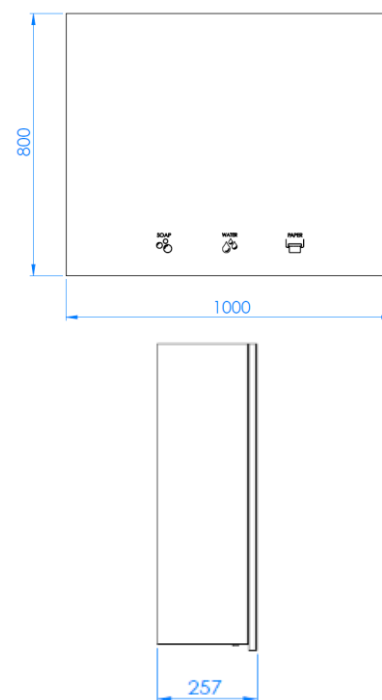
COMPONENTS AND MATERIALS

- **Automatic water tap dispenser module GA024BTM:** see corresponding technical data sheet.
- **Automatic soap dispenser module DJ024BTM:** see corresponding technical data sheet.
- **Paper towel dispenser module DT024BTM:** see corresponding technical data sheet.

TECHNICAL DATA

Weight	51.60 kg
Pictogram light	<10 W
Cabinet backlight	<16 W

DIMENSIONS



OPERATION

- **Automatic water tap dispenser module GA024BTM:** see corresponding technical data sheet.
- **Automatic soap dispenser module DJ024BTM:** see corresponding technical data sheet.

BTM03

Moisture-resistant
MDF wood

Matte black

Mediclinics S.A reserves the right to make changes or modifications to the products and their specifications without prior notice.



www.mediclinics.com



REVISION:
04/26

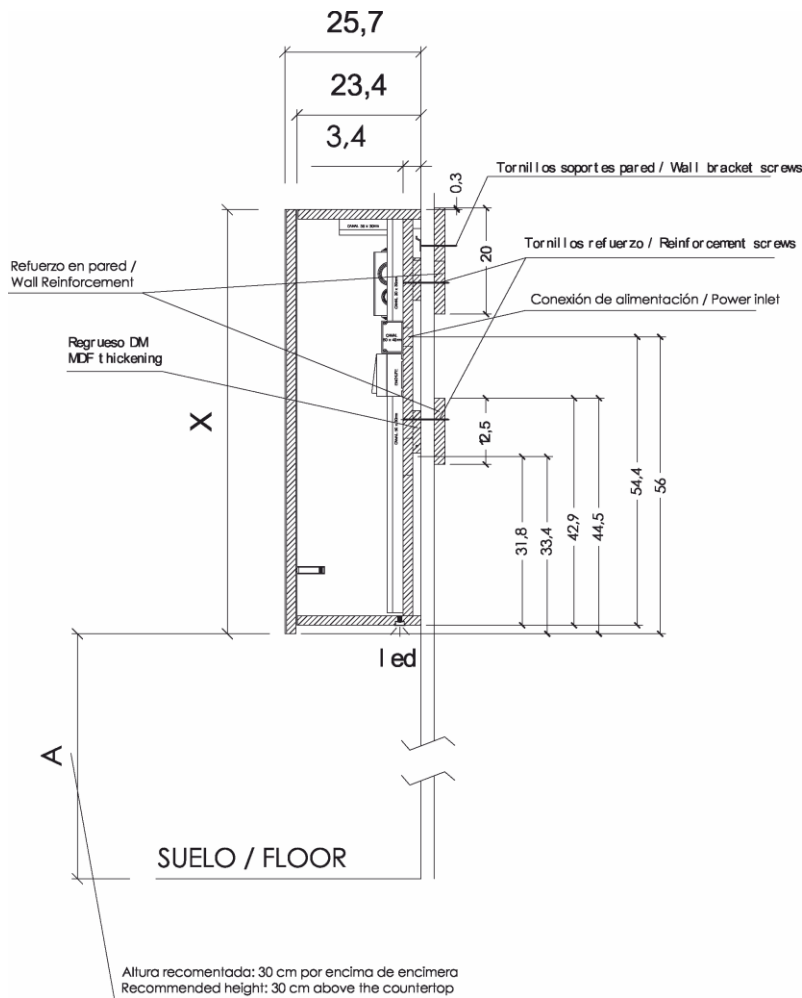
3-module cabinet: Water + Soap + Paper



GUIDE SPECIFICATION

Hygiene cabinet shall be composed of three elements: a paper towel dispenser, a sensor-operated faucet, and a sensor-operated soap dispenser. The cabinet shall weigh 51.60 kg. It shall be manufactured from moisture-resistant MDF wood with a matte black finish and a front mirror door with LED pictograms indicating each component. The automatic faucet shall have an infrared sensor located at the bottom. The faucet shall weigh 2.10 kg. It shall operate at a frequency of 50/60 Hz and a voltage of 220–240 V, or alternatively on 4x LR6 1.5 V batteries. The water flow rate shall be under 2 L/min (other flow rates available). The motion detection distance shall be adjustable via magnet between 5 and 25 cm. The soap dispenser shall have an infrared sensor located at the bottom. The dispenser shall weigh 3.80 kg. It shall operate at a frequency of 50/60 Hz and a voltage of 220–240 V, or alternatively on 4x LR6 1.5 V batteries. The tank shall have a capacity of 1.50 L. The viscosity of the soap shall be 1–3,500 cps for gel and 1–20 cps for foam. The motion detection distance shall be adjustable via magnet between 5 and 25 cm. The paper towel dispenser shall be manual. The dispenser shall weigh 2.80 kg. The housing shall be made of AISI 304 stainless steel. Its capacity shall be 600 Z-fold towels or 400 C-fold towels.

ASSEMBLY / RECOMMENDED INSTALLATION HEIGHTS



CERTIFICATIONS



Mediclinics S.A reserves the right to make changes or modifications to the products and their specifications without prior notice.

