

2-module cabinet: soap + hand dryer



EN

Complete cabinets

Ref. BTM12

Soap + Air

OVERVIEW

- Hygiene cabinet designed to house soap and hand dryer modules. Includes the modules.
- The front pictograms for soap and hand dryer are backlit with LED lights. It also has backlighting at the bottom of the cabinet.
- Available in a paper towel version instead of air (model BTM13).
- The door is suspended, locks with a key, and features 2 pneumatic pistons that facilitate opening and closing.
- 3 Schuko-type sockets are available to connect the soap dispenser and a transformer for the LED lights (included). The entire electrical installation is included; only one power supply point is needed for all cabinet functions.
- Adjustable hardware and wall mounts included.

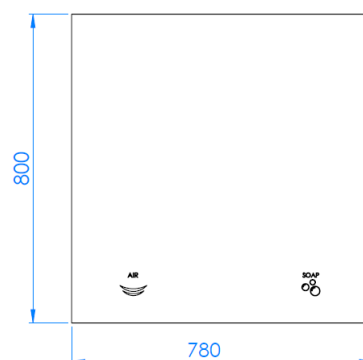
COMPONENTS AND MATERIALS

- **Automatic soap dispenser module DJ024BTM:** see corresponding technical data sheet.
- **Automatic hand dryer module M17A-BTM24:** see corresponding technical data sheet.

TECHNICAL DATA

Weight	43.60 kg
Pictogram light	<10 W
Cabinet backlight	<16 W

DIMENSIONS



OPERATION

- **Automatic soap dispenser module DJ024BTM:** see corresponding technical data sheet.
- **Automatic hand dryer module M17A-BTM24:** see corresponding technical data sheet.

BTM12

Moisture-resistant
MDF wood

Matte black

Mediclinics S.A reserves the right to make changes or modifications to the products and their specifications without prior notice.


www.mediclinics.com

 REVISION:
04/26

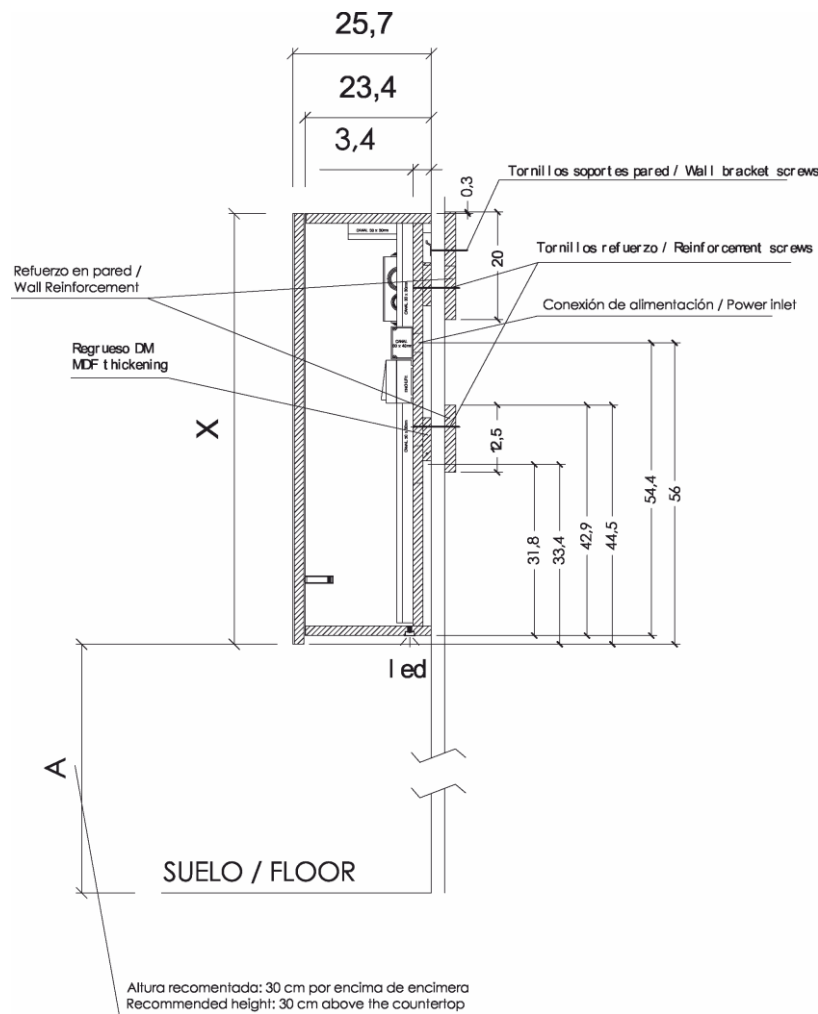
2-module cabinet: soap + hand dryer



GUIDE SPECIFICATION

Hygiene unit shall consist of two elements: a soap dispenser with sensor and an automatic hand dryer. The total weight of the unit shall be 43.60 kg. It shall be manufactured from moisture-resistant MDF wood in a black finish, with a front mirror door featuring LED pictograms indicating each component. The soap dispenser shall have an infrared sensor located on the lower part. The weight of the dispenser shall be 3.80 kg. It shall operate at a frequency of 50/60 Hz and a voltage of 220–240 V, or alternatively shall operate with 4x LR6 1.5 V batteries. The tank capacity shall be 1.50 L. The soap viscosity shall be 1–3,500 cps for gel and 1–20 cps for foam. The motion detection distance shall be adjustable by magnet between 5–25 cm. It shall comply with the standards related to the European Low Voltage Directive 2014/35/EU (EN 60335-1, EN 61000-3-2, EN 61000-3-3). The automatic “hands-under” type hand dryer shall have an infrared sensor located on the lower part. The weight of the unit shall be 3.20 kg. The housing shall be made of steel in a white finish. The housing thickness shall be 1.5 mm. It shall have an aluminium base. The motor shall be a class F brushed motor with an adjustable speed range between 23,000–32,000 rpm and a motor power of 180–350 W. It shall include a heating element with on/off switch and a power of 500 W. It shall operate at a frequency of 50/60 Hz and a voltage of 220–240 V, with a total power of 180–850 W and a current consumption of 2.8–5 A. It shall dry hands in 10–12 seconds at an air speed of 290–400 km/h. The motion detection distance shall be adjustable by potentiometer between 5–20 cm. It shall incorporate a HEPA filter as standard and optionally shall include an ionizer. It shall comply with the applicable standards for hand dryers (EN 60335-1, EN 60335-3-2, EN 61000-3-2, EN 61000-3-3).

ASSEMBLY / RECOMMENDED INSTALLATION HEIGHTS



CERTIFICATIONS



Mediclinics S.A reserves the right to make changes or modifications to the products and their specifications without prior notice.



www.mediclinics.com



REVISION:
04/26